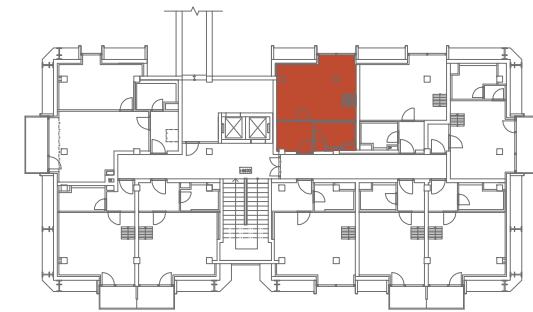
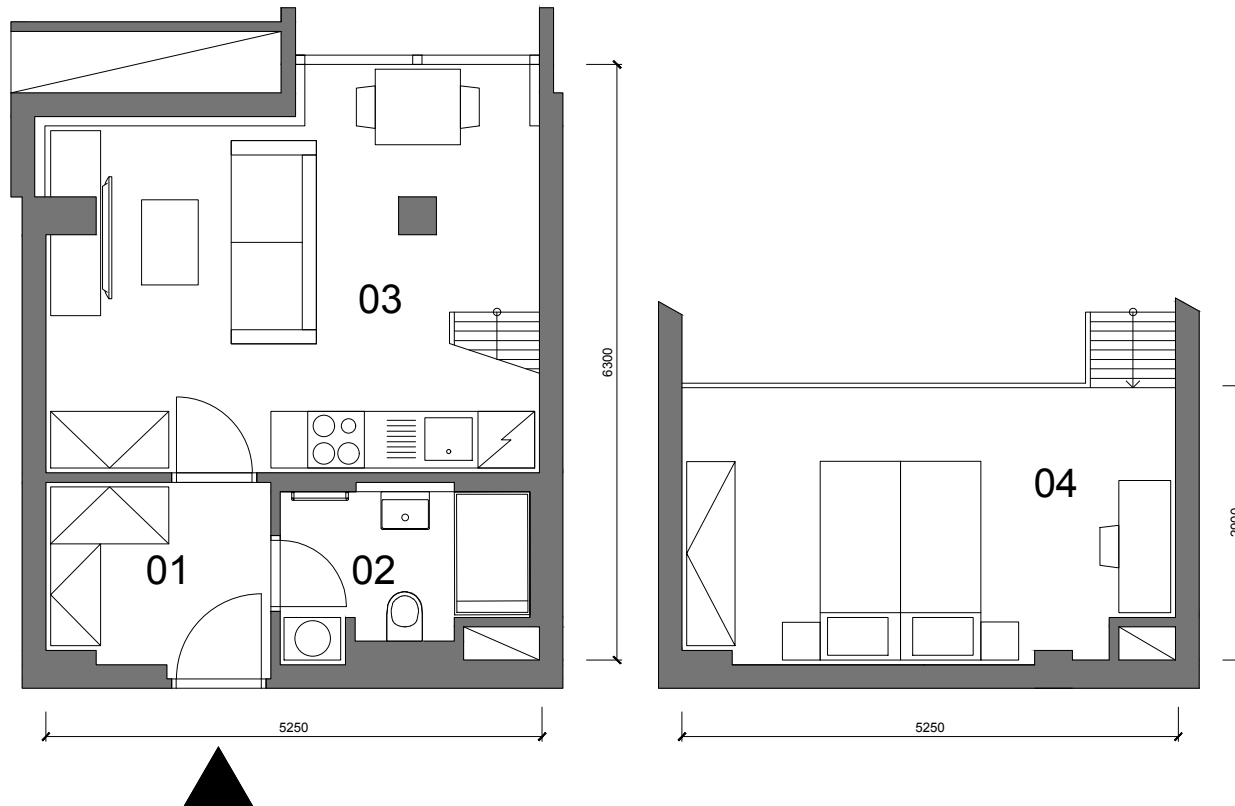


UBYTOVACÍ JEDNOTKA B.309

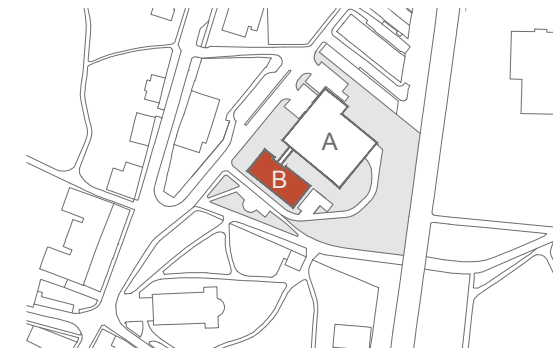
**3.NP 1+KK 31,7m<sup>2</sup> (PP)**

01	Chodba	4.8m <sup>2</sup>
02	Koupelna	4.2m <sup>2</sup>
03	Obývací pokoj	20.8m <sup>2</sup>
<b>UŽITNÁ PLOCHA</b>		<b>29.8m<sup>2</sup></b>
<b>PODLAHOVÁ PLOCHA</b>		<b>31.7m<sup>2</sup></b>
04	Spací patro /není započteno do užité plochy/	14.0m <sup>2</sup>

PP - Podlahová plocha



3.NP



SITUACE