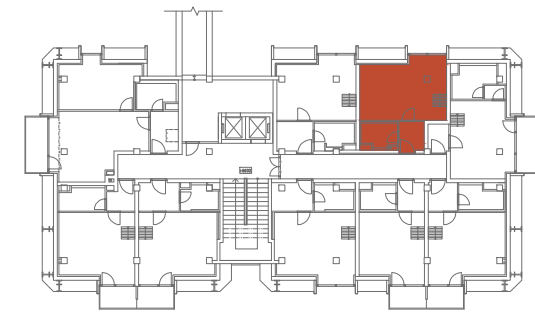
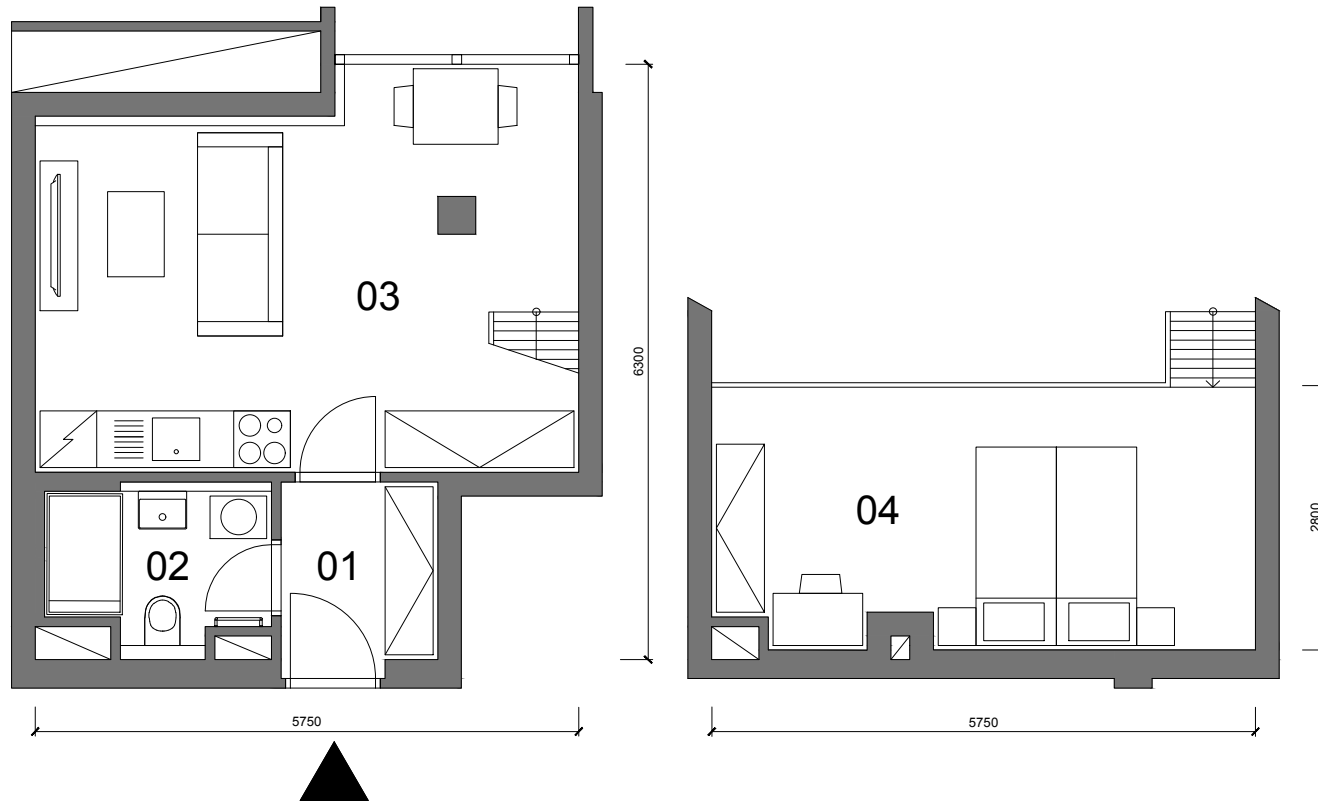


UBYTOVACÍ JEDNOTKA B.308

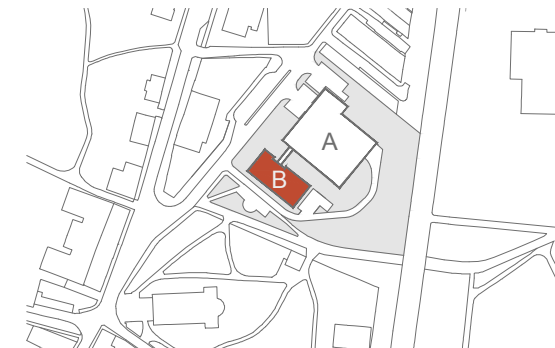
3.NP 1+KK 31,8 m<sup>2</sup>(PP)

01	Chodba	3.5m <sup>2</sup>
02	Koupelna	3.8m <sup>2</sup>
03	Obývací pokoj	22.9m <sup>2</sup>
<b>UŽITNÁ PLOCHA</b>		<b>30.3m<sup>2</sup></b>
<b>PODLAHOVÁ PLOCHA</b>		<b>31.8m<sup>2</sup></b>
04	Spací patro /není započteno do užité plochy/	14.4m <sup>2</sup>

PP - Podlahová plocha



3.NP



SITUACE