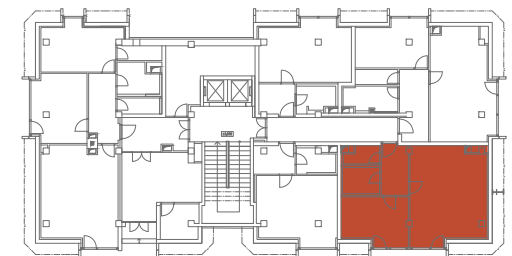
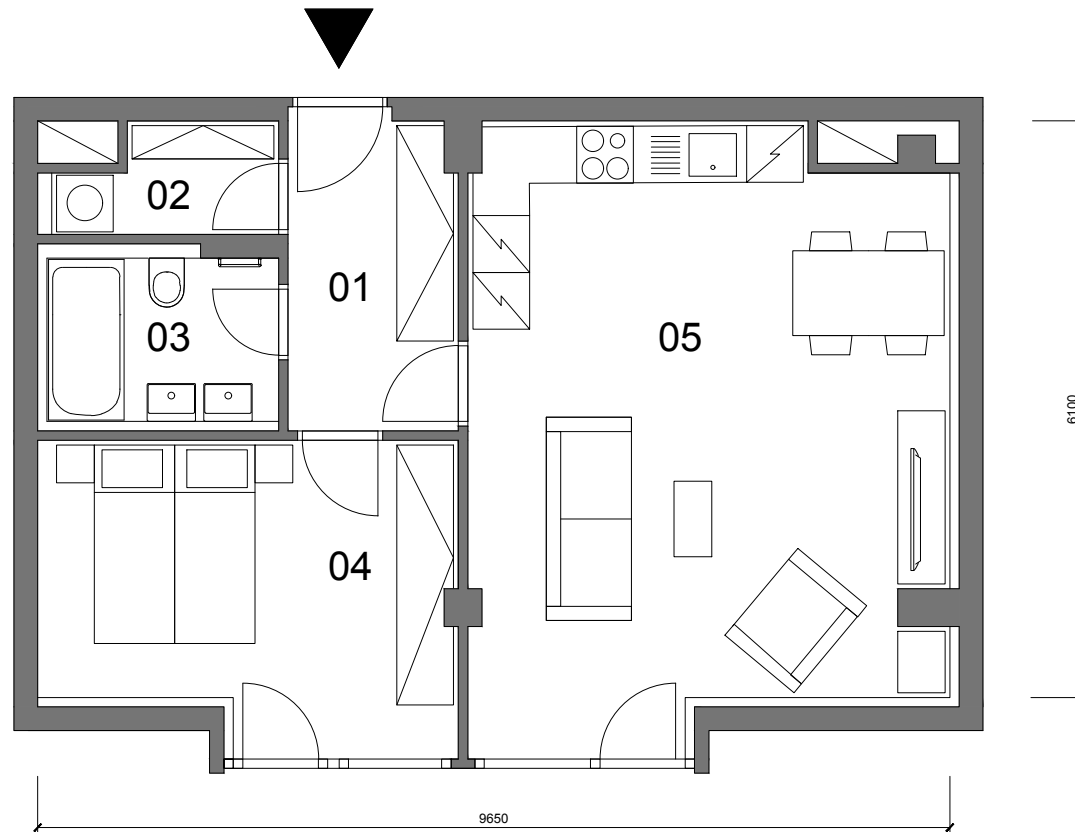


UBYTOVACÍ JEDNOTKA B.103

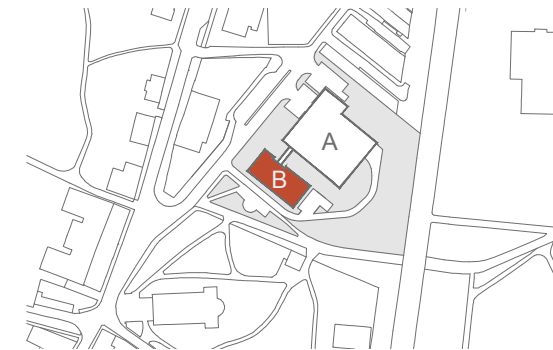
1.NP 2+KK 62,7m² (PP)

01	Chodba	6.3m ²
02	Komora	2.5m ²
03	Koupelna	4.9m ²
04	Ložnice	13.9m ²
05	Obývací pokoj	32.3m ²
UŽITNÁ PLOCHA		59.9m²
PODLAHOVÁ PLOCHA		62.7m²

PP - Podlahová plocha



1.NP



SITUACE